

Cameron Balloons US Service Bulletin 11



1	General	
(a)	Number	11
(b)	Revision / Date	0 / 1 JUN, 2025
(c)	Title	PRV Adaptor CB8426 for Legacy Fuel Tanks (Cylinders)
(d)	Description	Inspection and possible replacement of adaptors in service based on pass criteria.
(e)	Applicability	<p>This Service Bulletin addresses parts supplied by Cameron Balloons US (CBUS)-ONLY. It supplements but does not replace Cameron Balloons Ltd. Alert Service Bulletin #36 and is intended to better define applicability and effectivity for CBUS-supplied adapters.</p> <p>CBUS-supplied adapters are known to be installed on, but not limited to, hot-air balloons and airships manufactured by Cameron Balloons US, Colt Balloons, Thunder Balloons, and Thunder & Colt Balloons fitted with fuel tanks that use PRV adaptor CB8426 to mount the PRV in the fuel tank boss.</p>
(f)	Effectivity	<p>Possible fuel tanks fitted with PRV adaptor sold under CBUS part number F8426, and STAMPED WITH MARKING "CB8426".</p> <p style="text-align: center;">Cameron Balloons US: CBUS1050 iss. C Thunder & Colt: V20, V30, V40</p>
2	Background <p>Due to historic changes to Pressure Relief Valve (PRV) design, certain fuel tanks require an adapter to fit the current style of PRV. Two styles of PRV Adapter have been supplied by CBUS. This Service Bulletin only applies to adapters stamped "CB8426". Adapters without the "CB8426" marking are not included in this Service Bulletin.</p> <p>Several instances of failed CB8426 adaptors have been reported to Cameron Balloons Ltd, in the last 9 months, out of approximately 2,000 adapters in service.</p> <p>Of the total number of adapters placed into service, a total of nine of the CB8426 adapters have been supplied by CBUS, in or around 2016 and 2017.</p>	

Cameron Balloons US Service Bulletin 11



Failed components have presented with a crack located on the upper hex portion of the adaptor (see figure 2).

Note: No fuel tanks originally delivered by Cameron Balloons US were fitted with PRV Adapters. Only certain legacy fuel tanks that have been retrofitted with a different PRV via an adapter are the subject of this bulletin.

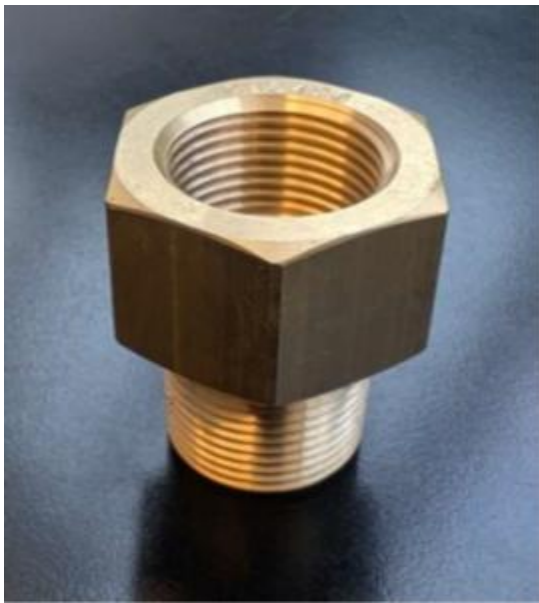


Figure 1
New CB8426, PRV Adaptor



Figure 2
Cracked CB8426, PRV Adaptor



Figure 3
Non-affected F8426 (not stamped with "CB8426")

Cameron Balloons US Service Bulletin 11



3	Compliance (Category) Required on receipt of this bulletin.
4	Consequences of Non-Compliance (Possible) Uncontrolled leak of LPG fuel.
5	Accomplishment Instructions Affected PRV adaptors installed in fuel tanks (cylinders) must be visually inspected for cracks within 24 hours of receipt of this bulletin. Any fuel tanks found to have cracked adaptors installed should be emptied of fuel immediately. Contact Cameron Balloons US in the event of the discovery of a cracked adapter. Affected PRV adaptors found without cracks can continue to be used for flight but must be inspected before each flight. Adapters supplied by CBUS that do not have the "CB8426" stamp do not need to be further inspected. These instructions can be performed by the pilot/owner.
6	Materials: None
7	Other Publications Affected: None
8	Mass (Weight)/Balance: Not affected
9	Maintenance and Operating Instructions: Not affected
10	Additional Information: For any questions concerning the technical content of the requirements in this Service Bulletin, please contact: <div style="text-align: center;">Cameron Balloons US 7399 Newman Blvd Dexter, MI 48130 email: tech@cameronballoons.com Phone: +1 734 426 5525</div>